



LIVE RADIANTLY

BJB Nagar, Kalpana Area, Bhubaneswar

Welcome to

SUREKHA
SAPPHIRE

Surekha Sapphire is a premium real estate project located in the bustling city of Bhubaneswar in the eastern Indian state of Odisha. The project is owned by Surekha Builders & Developers Pvt. Ltd., a reputable real estate company based in Bhubaneswar.

Surekha Sapphire aims to provide residents with a luxurious and comfortable lifestyle with modern amenities and a serene environment. The apartment complex is designed to cater to the needs of all residents, including families, professionals, and retirees.

The project features spacious and well-ventilated apartments that come in 3 BHK units. The apartments are equipped with premium fittings and fixtures and offer ample natural light and ventilation. The project is located in a prime location in Bhubaneswar, with easy access to major areas in the city, including schools, hospitals, and shopping centers. **Surekha Sapphire** is an ideal choice for anyone seeking a luxurious and comfortable lifestyle in Bhubaneswar.

S+4 | Vastu Complaint | 3 Side Open Flats | 2 Flats in Each Floor

Power backup for common area & 500W to each flat





TYPICAL FLOOR PLAN



101, 201, 301, 401

3BHK

SBA CA Balcony

1680 1035 125

in sqft

102, 202, 302, 402

3BHK

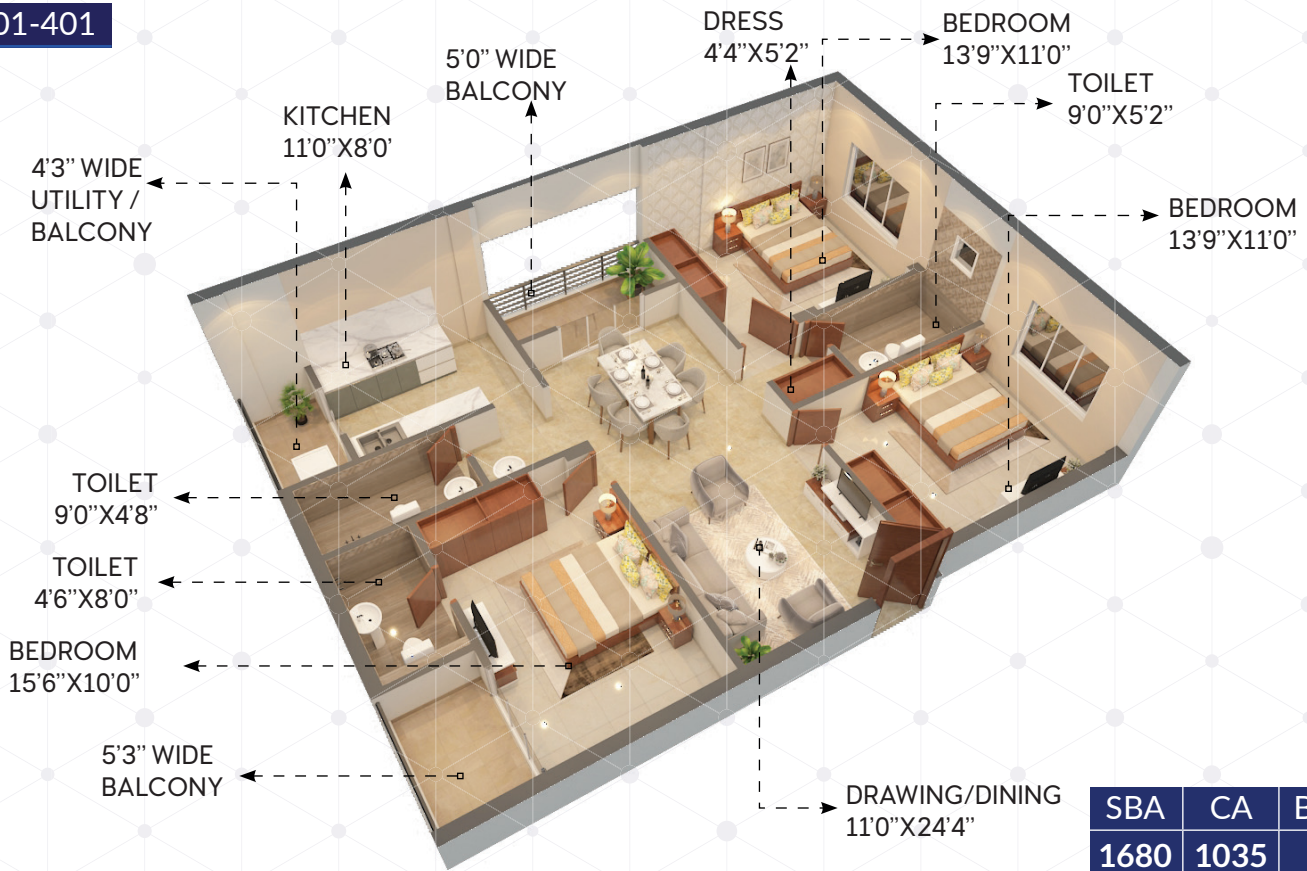
SBA CA Balcony

1700 1073 100

in sqft



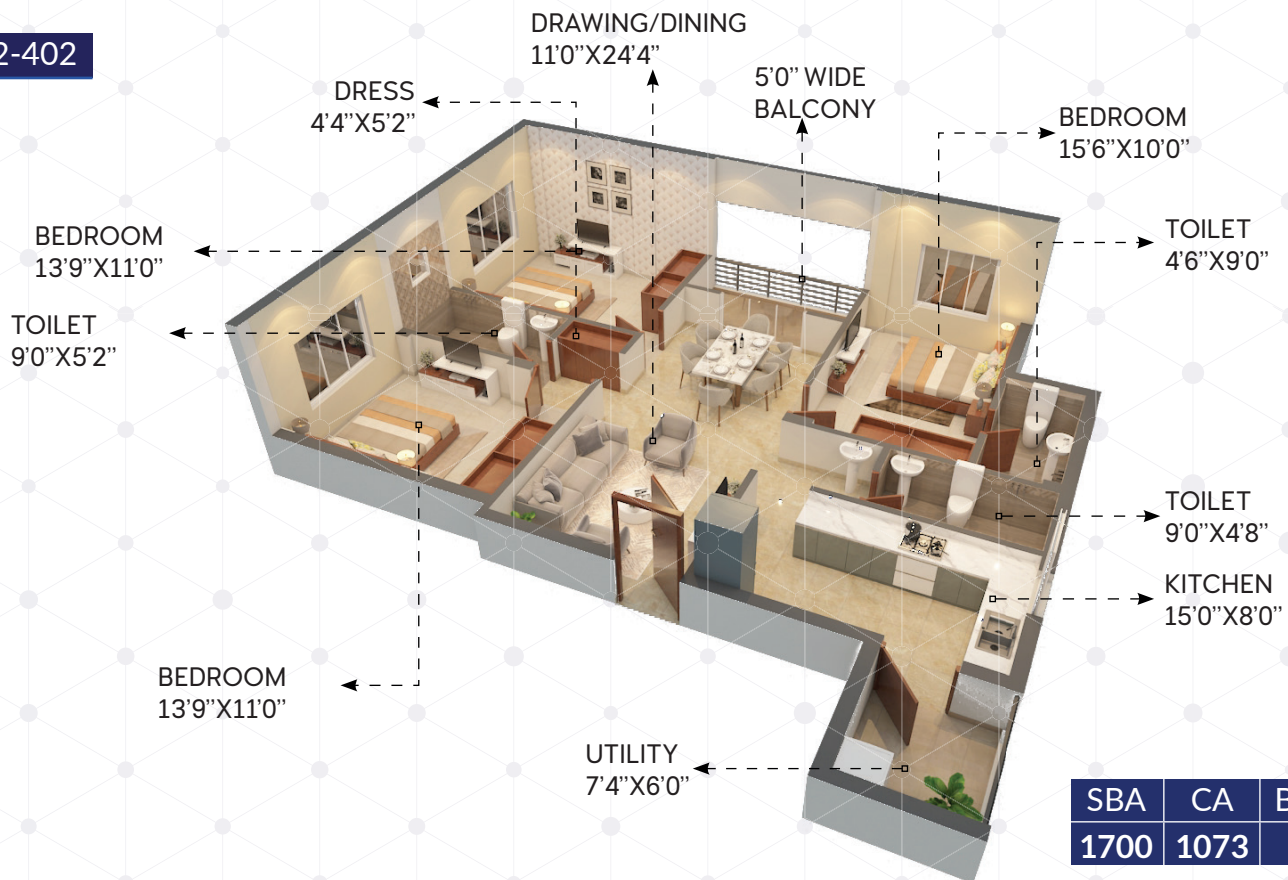
101-401



SBA	CA	Balcony
1680	1035	125

in sqft

102-402



SBA	CA	Balcony
1700	1073	100

in sqft

SPECIFICATION

STRUCTURE

- Foundation & RCC frame structure with fly-ash brick walls.

FLOORING

- Drawing / Dining / All rooms : Glazed Vitrified Tiles
- Master Bedroom : Wooden finish Glaze Porcelain Tiles
- Kitchen/Utility/Balcony : Glazed Vitrified Tiles

KITCHEN

- Wall Tiles : Tiles up to 2ft from top of the cooking platform
- Platform : Granite top & S.S Sink
- Others : Provision for Chimney

TOILET

- Flooring : Glazed Vitrified Tiles
- Wall : Glazed Vitrified Tiles up to 8 feet
- CP Fitting : Reputed Brands
- Sanitary Fitting : Porcelain Sanitary ware of Reputed Brand
- Others : Provision for Exhaust Fan & Geyser

WALL FINISHES

- Internal: 2 layers of Acrylic Putty with 1 layers of Primer
- External: Weather Coat Paint

DOORS & HARDWARE FITTINGS

- Main Doors & Hardware Fittings : Wooden/ WPC frame with Decorative Company made wooden door shutters with quality hardware fittings & locks
- Internal Doors & Hardware Fittings : Wooden/ WPC frame with Decorative Company made flush door shutters with quality hardware fittings & locks

WINDOW

- UPVC windows with protective M.S grills.

ELECTRICAL FITTINGS

- Cable & Wires of reputed brand with modular switches
- Provision of electrical points for AC in all bedrooms & drawing room.

INTERCOM / TV CABLE

- TV points for all Bedrooms & Drawing room
- Intercom facility at Drawing room

STAIR CASE / LOBBY / CORRIDOR

- Combination of Granite & Digital Glazed Vitrified Tiles.
- Lift facade with designer Tiles
- S.S Handrail for staircase.



ACCOMPLISHMENT



SUREKHA NIWAS
HANSPAL, BHUBANESWAR



THE EMERALD
Laxmisaagar, Bhubaneswar





For more details

9124000333 / 9124000444 / 9124000999



Surekha Builders & Developers Pvt. Ltd.

(A member of CREDAI, Bhubaneswar)

47/A, Ground Floor, Sahid Nagar, Bhubaneswar-751007

Ph: 0674-2546157

mail: info@surekhabuilders.com

www.surekhabuilders.com

Follow us   

Architect



AAKAAR Architects

N2/14, Nayapalli, Bhubaneswar-751015